



polygaV1

HI-SPEED 3D CAMERA

Accurate **X** Real Time Scanning

Polyga's Vision V1 is a high resolution, ultra accurate, high-speed 3D camera for industrial computer vision applications. The V1 is packaged in a rugged enclosure that is ready for integration into your 3D vision application.



Accuracy

Provides up to 4.5 million points every second with an accuracy of up to 80 microns.



High-Speed Cameras

Captures high quality data with frame rate of 15 FPS.



Color

Captures high quality texture data for critical vision applications.



Easy Integration

Connect to your computer easily over USB 3.0.



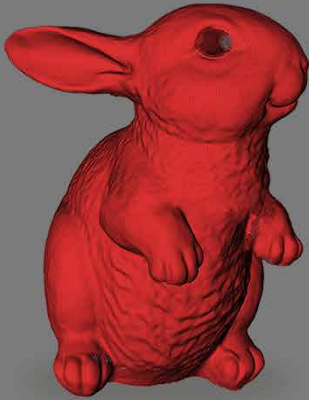
Factory Calibrated

High quality industrial calibration methods for the most accurate results.

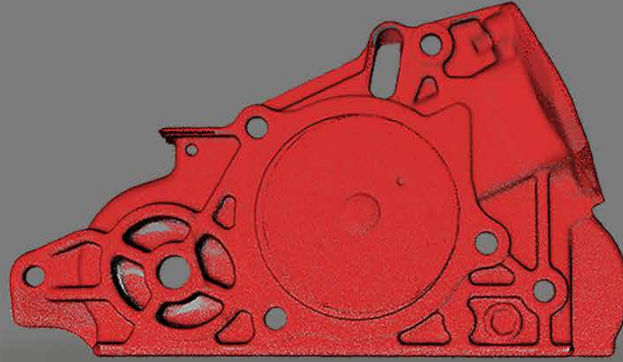


Ready To Use

Comes with FlexScan3D(GUI) and a C/C++ SDK.



Bunny Figurine



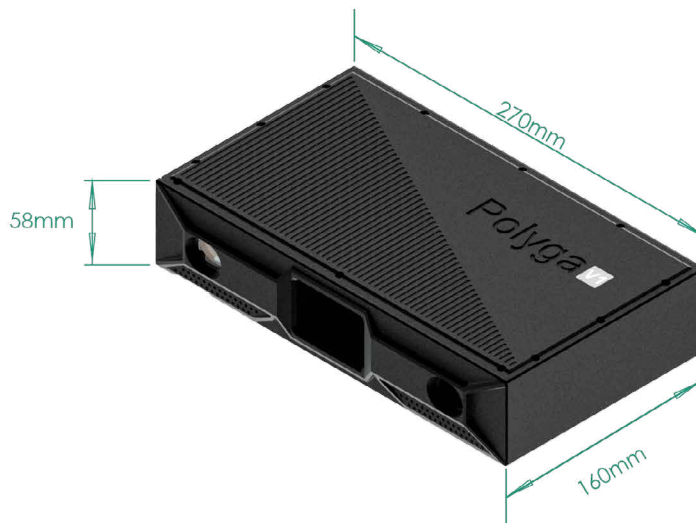
Mechanical Item



Skull

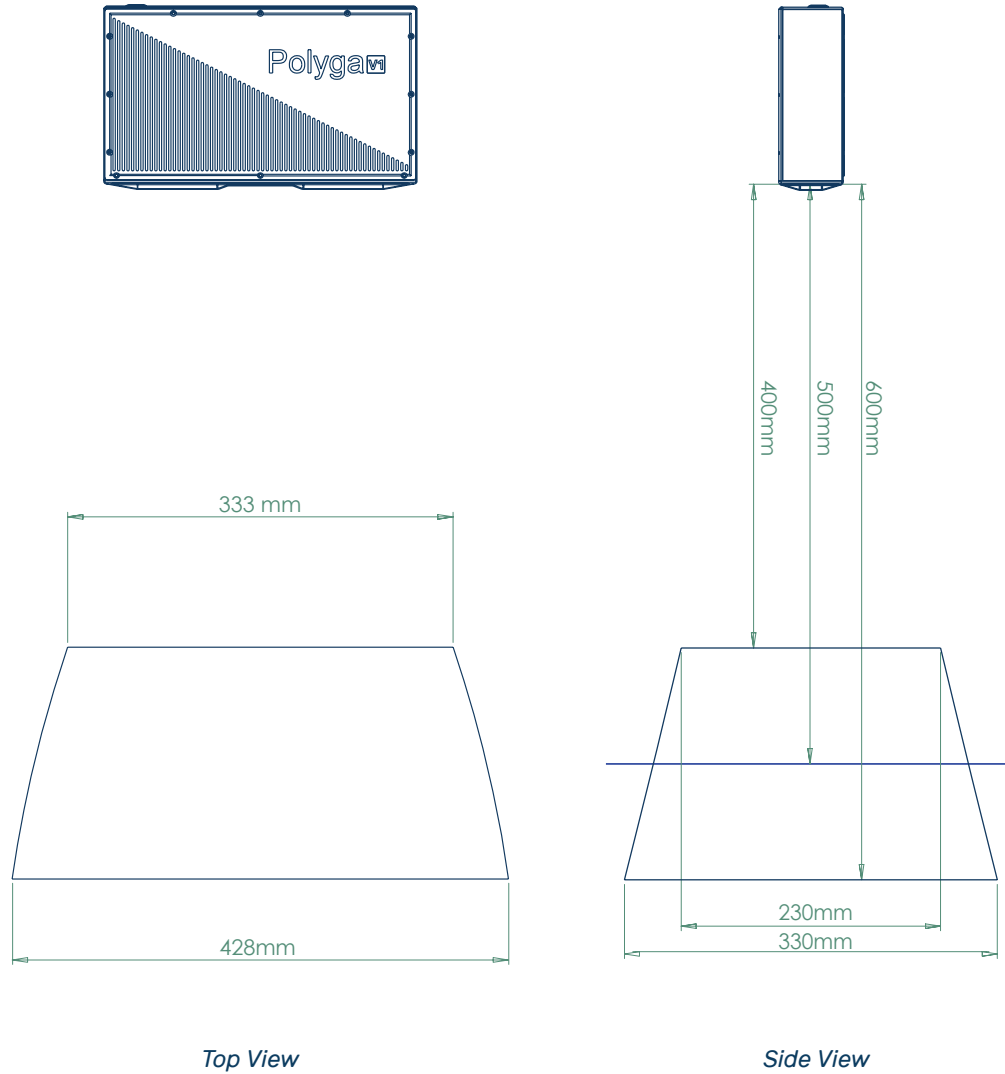
Specifications

Cameras:	2 x 700 FPS, monochrome or color option
Data Acquisition Speed (points per second)	Up to 4.5 million
Max FPS:	15
Size (mm):	58 x 270 x 160
Scanning Software:	FlexScan3D or SBSDK C/C++ SDK



Specifications

V1 - Field of View & Standoff Distance



Field of View:	333 x 230 - 428 x 330 mm
Point to Point Distance:	0.6 mm or better
Accuracy:	80 microns
Standoff:	500mm